



National Standard 10 Update

**NOAA
FISHERIES**

Office of
Sustainable
Fisheries

Commercial Fishing Safety Advisory Committee
Washington, DC

August 14, 2013

National Standard 10

- “Conservation and management measures shall, to the extent practicable, promote the safety of human life at sea.” (MSA section 301(a))
- Published Advance Notice of Proposed Rulemaking on April 21, 2011 (76 FR 22342).
- 90 day public comment period ending July 20, 2011.
- Held 5 public meetings.
- Received: 33 written comments; 36 oral comments.

National Standard 10

- Comments can be viewed on the Federal e-rulemaking portal: www.regulations.gov.
- To view the comments, enter "NOAA-NMFS-2011-0068" in the box that reads "Enter keyword or ID"
- http://www.nmfs.noaa.gov/sfa/laws_policies/national_standards/ns10_revisions.html
- Developing proposed rule.

National Standard 10 Projects

- Conducted two risk assessments:
 - Atlantic Scallop Fishery
 - Gulf of Mexico Shrimp Fishery

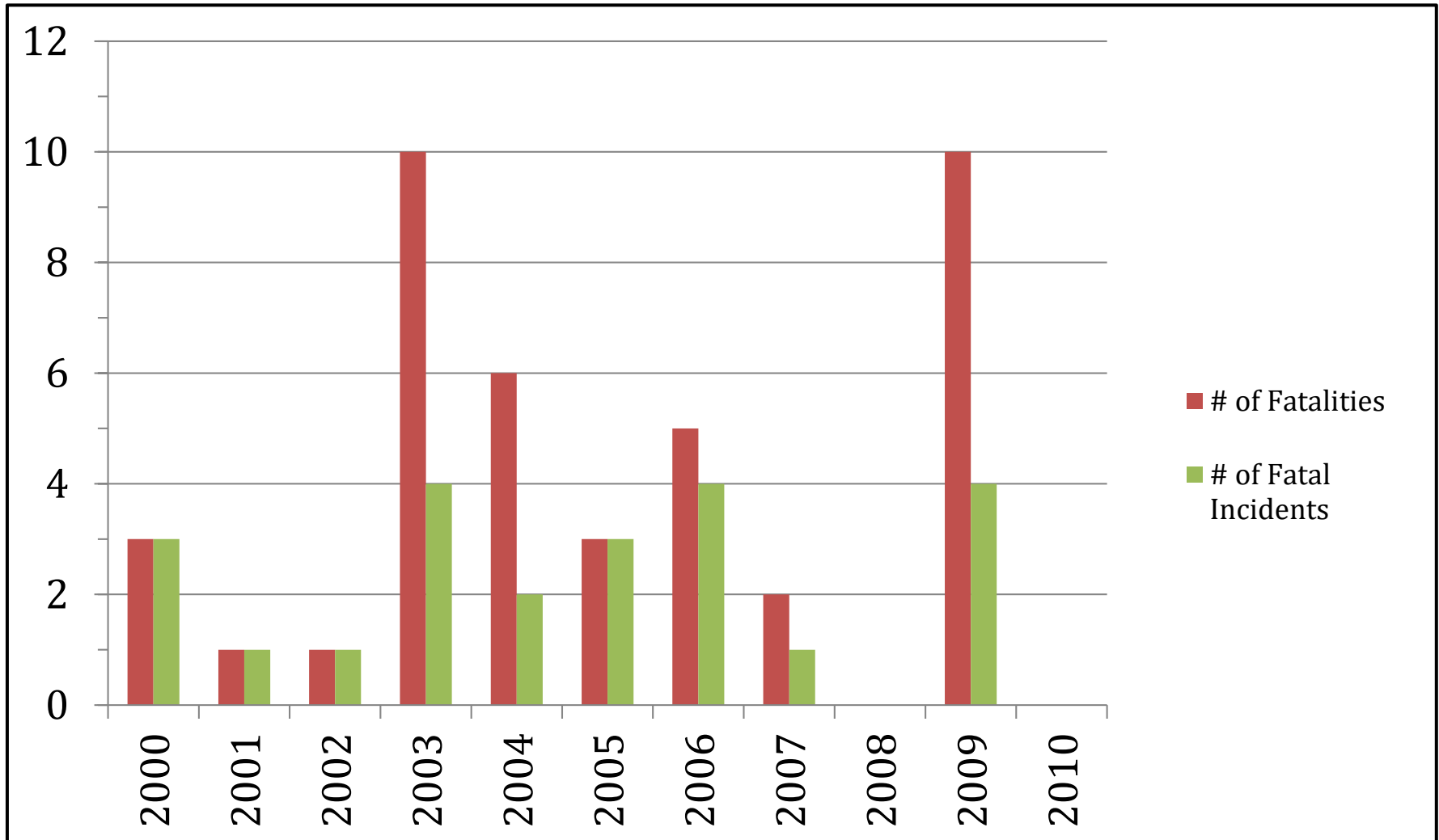


Atlantic Scallop Fishery



- Maine to North Carolina.
- Predominately in Federal waters.
- New England Fishery Management Council – Scallop Fishery Management Plan.
- March 1-February 28th
- Operates in cold water.
- Permit types:
 - Limited Access – 8 permit categories.
 - Predominately full-time dredge.
 - > 70 ft
 - In 2010, 354 active vessels.
 - Limited Access General Category – 3 permit categories.
 - < 50 ft
 - In 2010, 279 active vessels.

Atlantic Scallop Fishery (2000 – 2010)



Atlantic Scallop Fishery (2000 – 2010)

Activity at time of fatal incident	# of Fatalities	# of Fatal Incidents
Fishing	31	17
Transit Inbound or Outbound	6	5
Unknown (either fishing or transiting)	4	1
Total	41	23

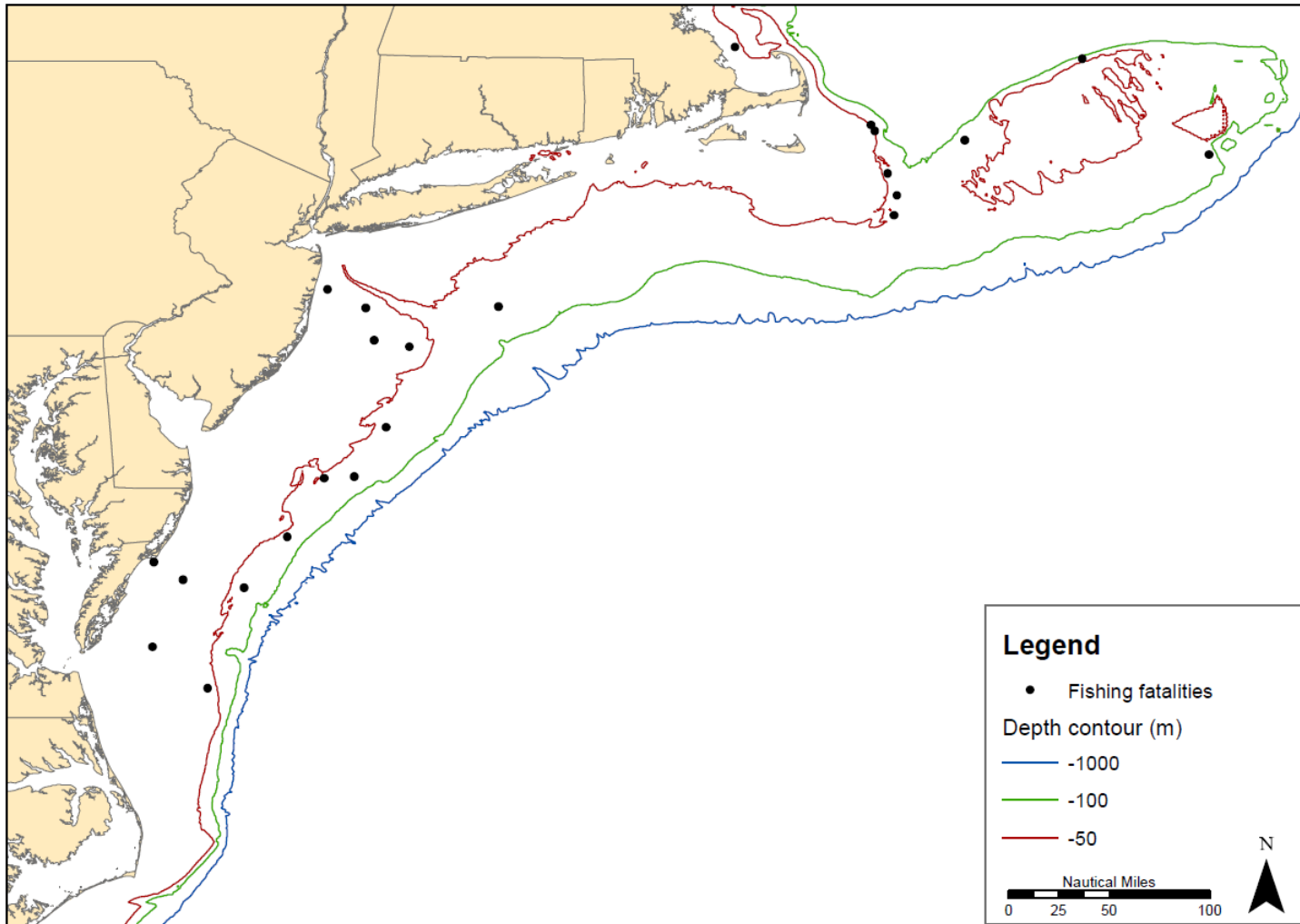
Type of fatal incidents	# of Fatalities	# of Fatal Incidents
Vessel disaster	30	12
Fall Overboard	8	8
On-board Injury	3	3
Total	41	23

Atlantic Scallop Fishery (2000 – 2010)

Type of Scallop Permit	Type of Fatal Incident			Total # of Fatal Incidents
	Vessel Disaster	On-board Injury	Fall Overboard	
Limited Access - Full-Time: Authorized to use trawl nets			1	1
Limited Access - Full-Time (dredge)	3	2	5	10
Limited Access - Full-Time small dredge	1			1
Limited Access - Part-Time small dredge			1	1
General Category	4			4
General Category (VMS required)	3		1	4
Limited Access General Category IFQ Permit	1			1
No Federal Permit (assume participating in state scallop fishery)		1		1
			sum	23

Atlantic Scallop Fishery (2000 – 2010)

Vessel Length	# of Fatalities	Type of Incident			# of Fatal Incidents
		Vessel Disaster	On-board Injury	Fall Overboard	
0-29	0				0
30-39	2	1			1
40-49	9	3	1		4
50-59	3	3			3
60-69	5	2			2
70-79	19	3	2	5	10
80-89	2			2	2
90-99	1			1	1
Total	41	12	3	8	23

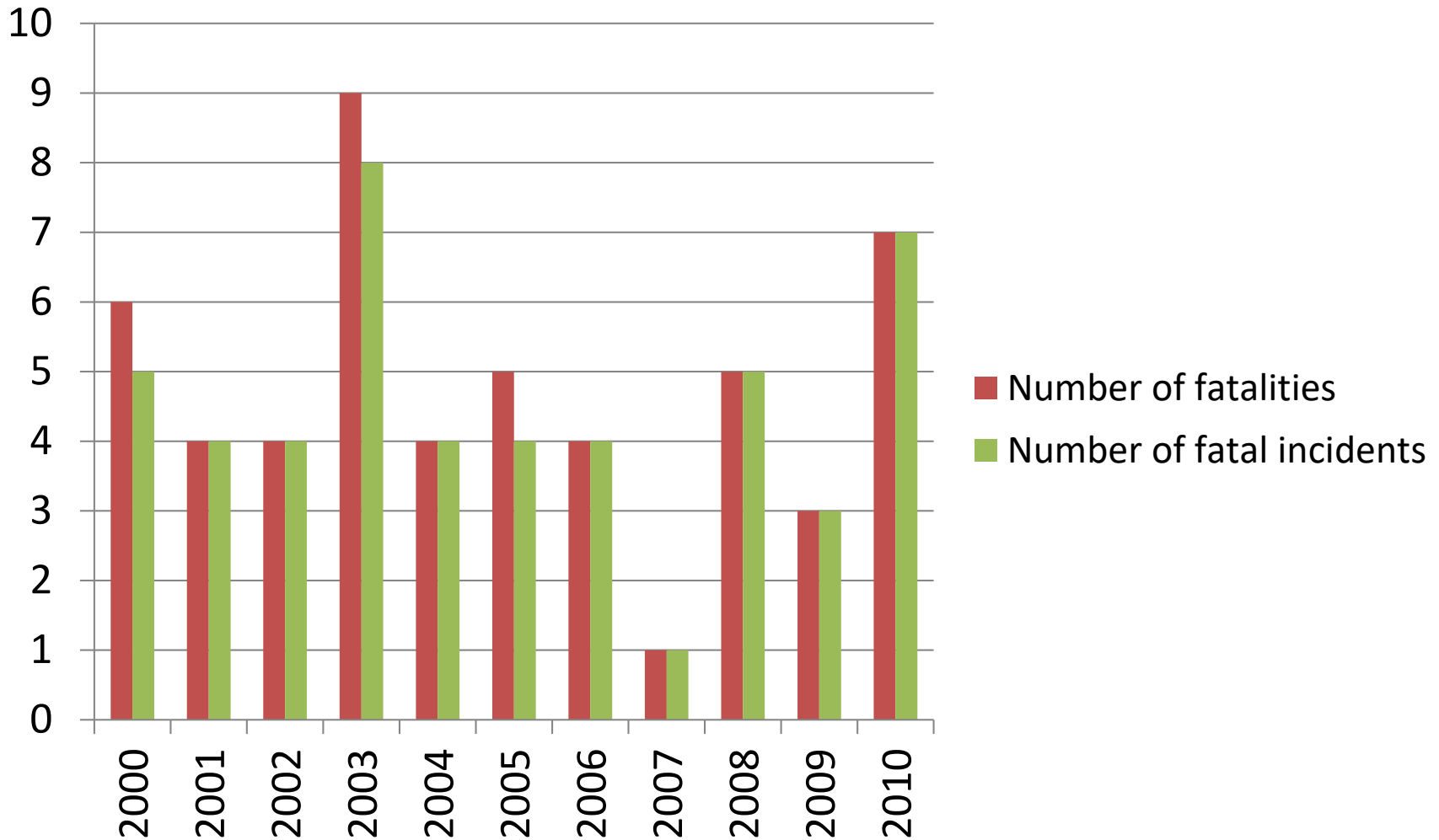


Gulf of Mexico Shrimp Fishery



- Target: brown, white, pink, and royal red shrimp.
- Fishery occurs in state and Federal waters.
- Gulf of Mexico Fishery Management Council – Shrimp Fishery Management Plan.
- 1806 active vessels
- 77% have steel hull
- 55% have onboard freezing capacity; 45% use ice.
- Average crew size: 3.3
- Average vessel length: 69 ft

Gulf of Mexico Shrimp Fishery (2000 – 2010)

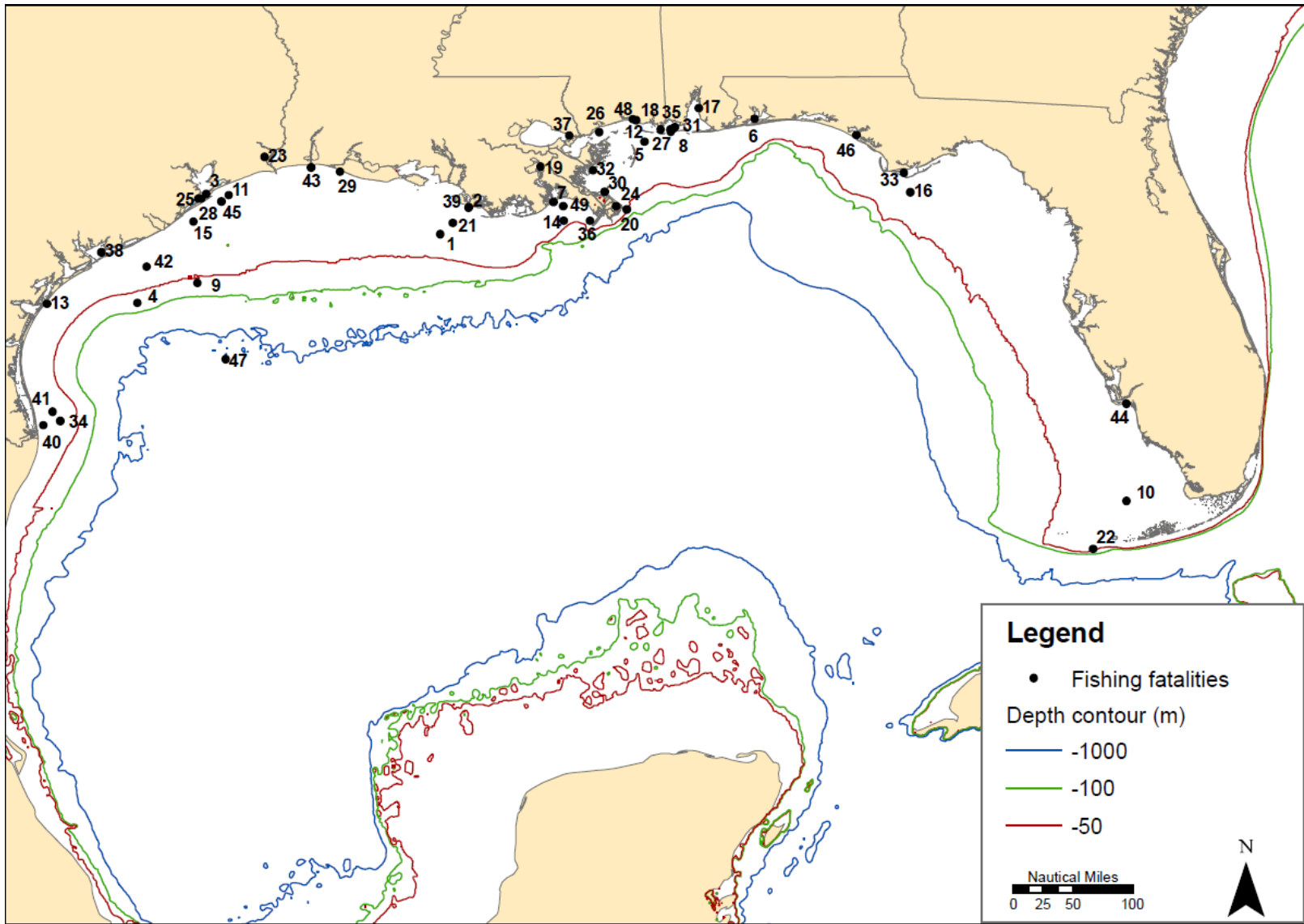


Gulf of Mexico Shrimp Fishery (2000 – 2010)

Activity at time of fatal incident	# of Fatalities	# of Fatal Incidents
Fishing	33	33
Anchored	9	7
Transit Inbound or Outbound	6	5
Moored	1	1
Unknown	3	3
Total	52	49

Gulf of Mexico Shrimp Fishery (2000 – 2010)

Accident sub-category	Diving accident	Man overboard	On-board injury	Vessel disaster	Total
Air quality			1		1
Electrocution			1		1
Struck by gear			2		2
Gear entanglement		1	6		7
Climbing accident		2			2
Vessel motion/lost balance		4			4
Unknown	1	17			18
Diving accident	4				4
Collision/allision				2	2
Fire/explosion				1	1
Flooding				1	1
Instability				3	3
Weather				3	3
Total	5	24	10	10	49
Percentage	10.2%	49.0%	20.4%	20.4%	100%





Questions

