

U.S.C.G. Merchant Marine Exam

Master or Mate Less than 200 Gross Registered Tons

Q341 Deck Safety

(Sample Examination)

Choose the best answer to the following Multiple-Choice Questions.

1. Which is TRUE of the vapor pressure of a substance?

- A. It increases with the temperature
- B. It decreases as temperature increases
- C. It is not affected by temperature
- D. It may increase or decrease as the temperature rises

Correct answer: A

2. You have sent a visual signal to an aircraft. The aircraft then flies over your position on a straight course and level altitude. What should you do?

- A. Repeat your signal
- B. Send more signals
- C. Change course to follow the airplane
- D. Prepare for a helicopter pickup

Correct answer: A

3. Your vessel participates in AMVER. Which of the following is an AMVER reporting requirement?

- A. Near coastal reports are sent when the vessel is within 50 miles of land
- B. Position reports must be sent every 36 hours during the voyage
- C. Sailing plans can be submitted a few hours prior to departure
- D. The final report can be projected up to 3 hours prior to arrival

Correct answer: C

4. What does the helm command "Left twenty" mean?

- A. Put the rudder left twenty degrees and then ease back as the vessel starts swinging
- B. Change course twenty degrees to the left
- C. Put the rudder hard left for the first twenty degrees of swing
- D. Put the rudder left twenty degrees

Correct answer: D

5. How are lifelines attached to a life float?

- A. By splicing one end of the line around the apparatus
- B. With an approved safety hook or shackle
- C. By serving
- D. Securely attached around the outside in bights no longer than three feet

Correct answer: D

6. A person who observes an individual fall overboard should do which of the following?

- A. Run to the radio room to send an emergency message
- B. Call for help and keep the individual in sight
- C. Immediately jump into the water to assist the individual
- D. Go to the control room for the distress flares

Correct answer: B

7. A wooden plug fitted tightly in the vent of a damaged tank may prevent which situation?
- A. The tank developing free surface
 - B. Developing free surface moment
 - C. The tank from collapsing
 - D. The tank filling completely

Correct answer: D

8. Which visual distress signal is acceptable for daylight use only?
- A. Hand-held red flare
 - B. Self-contained rocket-propelled parachute red flare
 - C. Red aerial pyrotechnic flare
 - D. Hand-held orange smoke distress flare

Correct answer: D

9. Which statement is FALSE concerning precautions during small craft fueling operations?
- A. A fire extinguisher should be kept nearby.
 - B. All engines, motors, fans, etc. should be shut down when fueling.
 - C. All windows, doors, hatches, etc. should be closed.
 - D. Fuel tanks should be topped off with no room for expansion.

Correct answer: D

10. Which of the following statements is FALSE concerning the proper procedure in handling a fire hose?
- A. The nozzleman should always hold the nozzle with one hand on top, to prevent kickback.
 - B. The fire hose should be partially charged before deploying it from the fire station.
 - C. A 1½ inch hose should be deployed with a minimum of a nozzleman and hoseman.
 - D. Back-up hosemen should be positioned wherever the hose makes a significant turn.

Correct answer: B

11. According to regulations, how many portable fire extinguishers are required in the cargo tank area of an unmanned, cargo pump-equipped tank barge engaged in transferring grade B flammable liquids?
- A. None are required in the tank area of a tank barge
 - B. Two B-II extinguishers or post 2017 Two 40-B extinguishers
 - C. One B-I extinguisher or post 2017 One 40-B extinguisher
 - D. Three B-II extinguishers or post 2017 Three 40-B extinguishers

Correct answer: B

12. You are tending the lifeline of a man who entered a compartment using a breathing apparatus. How many tugs on the lifeline indicate the man should advance?
- A. 1
 - B. 2
 - C. 3
 - D. 4

Correct answer: B

13. What power source actuates a solenoid valve?

- A. Mechanical force
- B. Hydraulic pressure
- C. Air pressure
- D. Electric current

Correct answer: D

14. Which extinguishing agent is most effective on a mattress fire?

- A. Dry Chemical
- B. CO2
- C. Halon
- D. Water

Correct answer: D

15. What is the minimum number of deck officers, able seaman or certificated persons required to command each lifeboat on a vessel in ocean service?

- A. Two
- B. Three
- C. Four
- D. Five

Correct answer: A

16. Which statement is TRUE concerning spare charges for portable fire extinguishers on unmanned tank barges?

- A. If the unit cannot be charged by the vessel's personnel, one spare unit shall be carried in lieu of spare charges.
- B. Spare charges shall be stowed in watertight containers on deck.
- C. Spare charges shall be carried for at least 50 percent of each size and variety required on board.
- D. Regulations concerning spare charges do not apply to unmanned barges.

Correct answer: D

17. Why is it desirable to have screens on the vents of potable water tanks?

- A. To prevent backups
- B. To prevent explosions
- C. To filter the incoming air
- D. To stop insects from entering

Correct answer: D

18. What does the helm command "Steady as you go" mean?

- A. Maintain the rate of swing
- B. Steer the course you are on now
- C. Steer the course when the swing stops
- D. Don't allow the vessel to swing off course so much

Correct answer: B

19. When using a handheld smoke signal in a liferaft, at which location should you activate the signal?

- A. On the upwind side of the liferaft
- B. On the downwind side of the liferaft
- C. At the stern of the liferaft
- D. Inside the liferaft

Correct answer: B

20. Which is TRUE concerning the nozzle of a gasoline hose or can while fueling your vessel?

- A. Allow the nozzle to make contact with the fill opening to allow proper venting
- B. Keep the nozzle in contact with the fill opening to guard against static spark
- C. Do not allow the nozzle to make contact with the fill opening to guard against static spark
- D. None of the above

Correct answer: B

21. What would be used to call all stations in your vicinity by radiotelephone?

- A. Alpha Alpha
- B. Charlie Quebec
- C. Calling all stations
- D. Kilo

Correct answer: B

22. To lubricate the swivel or remove corrosion from a fire hose coupling, which should be used?

- A. Glycerine
- B. Graphite
- C. Fresh water and soap
- D. Kerosene

Correct answer: C

23. In illustration D033DG below, which letter indicates a butt?

- A. E
- B. J
- C. D
- D. F

Correct answer: C

24. You are in a survival craft broadcasting a distress message. What information would be essential to your rescuers?

- A. Your radio call sign
- B. Your position by latitude and longitude
- C. The time of day
- D. The nature of the distress

Correct answer: B

25. Which vessel is NOT required to have a radiotelephone?

- A. A 34-foot vessel engaged in towing
- B. A dredge operating in a channel
- C. A 12-meter private yacht
- D. A vessel of 100 GT carrying 50 passengers for hire

Correct answer: C

26. The greatest effect on stability occurs from loose liquids flowing _____.

- A. in and out of a vessel that is holed in a peak tank
- B. in and out of a vessel that is holed in a wing tank
- C. from side to side in the tanks of the vessel
- D. from fore to aft in the tanks of a vessel

Correct answer: B

27. To prevent the spread of fire by convection you should take which action?

- A. Close all openings to the area
- B. Remove combustibles from direct exposure
- C. Shut off all electrical power
- D. Cool the bulkhead around the fire

Correct answer: A

28. You are in the process of righting an inflatable liferaft that has inflated in an upside-down position. Which statement is TRUE?

- A. As the raft flips to the upright position, you will be thrown clear.
- B. Swim out from under the raft in a face up position to keep your life preservers clear of the raft.
- C. You should remove your life preservers before attempting to right an inflatable raft.
- D. After the raft is in the upright position on top of you, dive down to prevent your life preservers from fouling as you come out.

Correct answer: B

29. Which may ignite fuel vapors?

- A. An open and running motor
- B. Loose wiring
- C. Static electricity
- D. All of the above

Correct answer: D

30. If your vessel is equipped with inflatable liferafts, how should they be maintained?

- A. Have your crew check them annually.
- B. Have them sent ashore to an approved maintenance facility annually.
- C. They do not need any maintenance.
- D. Have them serviced by the shipyard annually.

Correct answer: B

31. Which term is used to describe the projecting lugs of the rudderpost which furnish support to the rudder?

- A. Pintles
- B. Bases
- C. Gudgeons
- D. Rudder lugs

Correct answer: C

32. The floors in a vessel's hull structure are kept from tripping, or folding over, by which item?

- A. Longitudinal deck beams
- B. Face plates
- C. Transverse deck beams
- D. Bottom longitudinals

Correct answer: D

33. A stored-pressure water extinguisher is most effective against which class of fires?

- A. A
- B. B
- C. C
- D. D

Correct answer: A

34. Which is the most serious effect of air trapped in a non-treated diesel engine jacket water cooling system?

- A. It reduces the ability of the system to cool the engine
- B. It can form pockets which block the flow of coolant through the system
- C. The air causes corrosion
- D. It accelerates formation of metal plating

Correct answer: C

35. Fire in an engine compartment is best extinguished with carbon dioxide gas (CO₂) and by which action?

- A. Completely closing the compartment
- B. Leaving the compartment open to the air
- C. Closing the compartment except for the ventilators
- D. Increasing the air flow to the compartment by blowers

Correct answer: A

36. A class C fire would be burning _____.

- A. fuel oil
- B. celluloid
- C. wood
- D. electrical insulation

Correct answer: D

37. How are all diesel engines classified?

- A. Four cycle
- B. Vacuum ignition
- C. External combustion
- D. Compression ignition

Correct answer: D

38. When must a dry chemical fire extinguisher be recharged?

- A. After each use
- B. When the air temperature exceeds 90°F
- C. Every 6 months
- D. Every 12 months

Correct answer: A

39. To launch a liferaft by hand, you should take which actions?

- A. Detach the operating cord, throw the liferaft over the side and it will then inflate
- B. Cut the casing bands, throw the raft over the side and pull the operating cord
- C. Throw the liferaft over the side and pull the operating cord
- D. Cut the casing bands, throw the raft over the side and it will inflate by itself

Correct answer: C

40. Your vessel has just received a distress message. As the master of the vessel, when are you relieved of your obligation to assist in the search and rescue operations?

- A. If your vessel's time schedule conflicts with rendering assistance
- B. If you are informed by the persons in distress or by the master of another on scene vessel that assistance is no longer required
- C. If your vessel is one of two vessels that has been requisitioned for assistance by the Rescue Coordination Center
- D. If your vessel does not have a fast rescue boat or a motorized lifeboat readily available

Correct answer: B

41. What is the minimum number of fire pumps required on a cargo vessel of 900 GT?

- A. 1
- B. 2
- C. 3
- D. 4

Correct answer: A

42. For the purpose of training and drills, if reasonable and practicable, how frequently should rescue boats be launched with their assigned crew?

- A. Once a month
- B. Once a year
- C. Twice a year
- D. Once a week

Correct answer: A

43. You are operating a fire hose with an applicator attached. If you put the handle of the nozzle in the vertical position you will _____.

- A. produce a straight stream
- B. produce high-velocity fog
- C. produce low-velocity fog
- D. shut off the water

Correct answer: C

44. A deck-stowed 40-foot container is giving off smoke, and one end is discolored from heat. The cargo is valuable and easily damaged by water. You want to extinguish the fire without further damage if possible. What action should you take?

- A. Flood the container with water and disregard any cargo damage as the fire threatens the entire vessel.
- B. Cool the exterior of the container with water and close all vents; then keep it cooled until it can be off-loaded.
- C. Pierce the container and discharge 6 or more portable CO₂'s then add more CO₂ hourly.
- D. Connect a portable line from the ship's fixed system and discharge CO₂ into the container.

Correct answer: C

45. To turn over an inflatable liferaft that is upside down, you should pull on which item?

- A. Canopy
- B. Manropes
- C. Sea painter
- D. Righting strap

Correct answer: D

46. Freeboard is measured from the upper edge of which item?

- A. The bulwark
- B. The deck line
- C. The gunwale bar
- D. The sheer strake

Correct answer: B

47. What term indicates the immersed body of the vessel forward of the parallel mid-body?

- A. Entrance
- B. Sheer
- C. Flare
- D. Run

Correct answer: A

48. Which statement about damage control is TRUE?

- A. A hole in the hull at the waterline is more dangerous than a hole below the inner bottom.
- B. Water flowing into a lower compartment on a ship is more dangerous than water on deck or flowing into an upper compartment.
- C. The amount of water entering a ship through a hole varies inversely to the area of the hole.
- D. Water flowing over the fo'c'sle bulwark is more dangerous than a hole in the hull at the waterline.

Correct answer: A

49. Pitching is angular motion of the vessel about what axis?

- A. Transverse
- B. Longitudinal
- C. Centerline
- D. Vertical

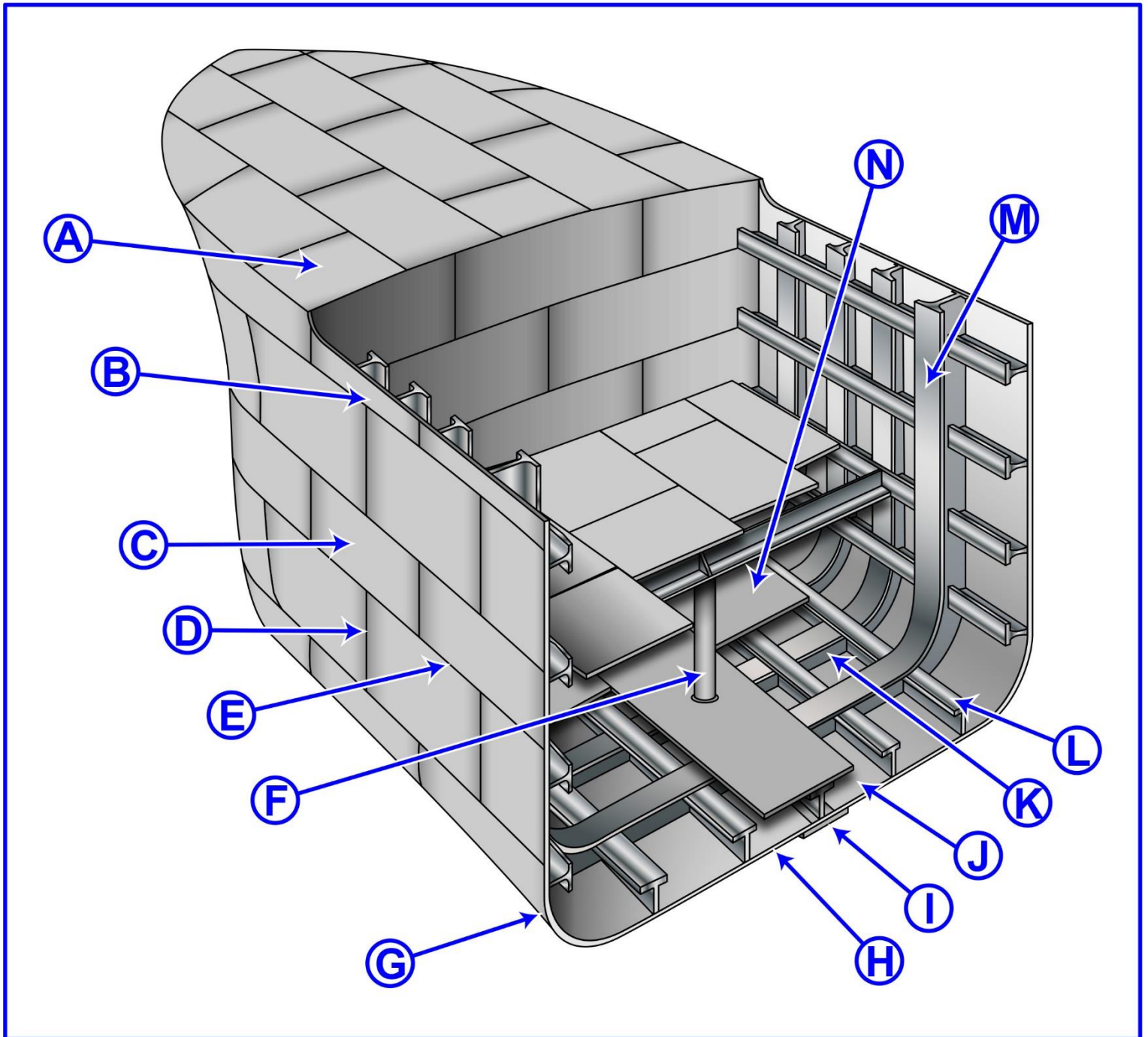
Correct answer: A

50. Normally, where is the potable water systems directly connected to?

- A. The feed-water system
- B. The vessel's fire-main system
- C. A freshwater sanitary system
- D. The potable water tank

Correct answer: D

D033DG



Adapted for testing purposes only from Hull Maintenance Technician
NAVEDTRA 14119
Further reproduction prohibited without permission